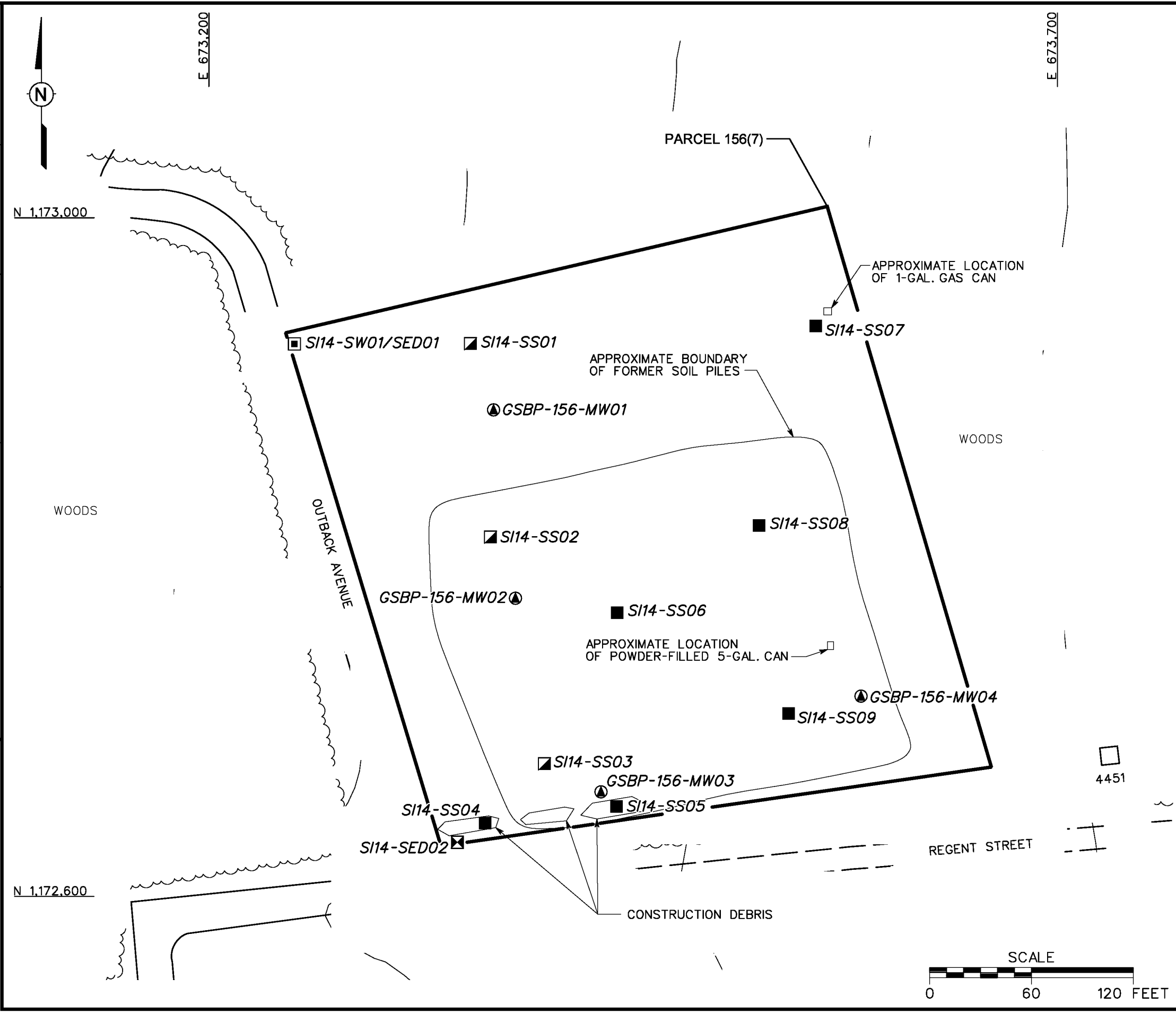


DBILLING
c:\cadd\design\783149.es,175
07/23/01 09:03:04 AM
STARTING DATE: 04/23/01
DRAWN BY: D. BOMAR
DATE LAST REV.:
ENGR. CHK. BY: S. MORAN
DRAFT. CHK. BY:
INITIATOR: T. WINTON
PROJ. MGR.: J. YACOB
PROJ. NO.: 783149
DWG. NO.: ... \783149.es,175



- LEGEND**
- UNIMPROVED ROADS AND PARKING
 - PAVED ROADS AND PARKING
 - BUILDING
 - TOPOGRAPHIC CONTOURS (CONTOUR INTERVAL - 5 FOOT)
 - TREES / TREELINE
 - PARCEL BOUNDARY
 - GROUNDWATER SAMPLE LOCATION
 - SURFACE AND SUBSURFACE SOIL SAMPLE LOCATION
 - SEDIMENT SAMPLE LOCATION
 - SURFACE WATER/SEDIMENT SAMPLE LOCATION
 - SURFACE SOIL SAMPLE LOCATION

FIGURE 3-1
SAMPLE LOCATION MAP
GROUND SCAR NEAR THE ASP
PARCEL 156(7)

U. S. ARMY CORPS OF ENGINEERS
MOBILE DISTRICT
FORT McCLELLAN
CALHOUN COUNTY, ALABAMA
Contract No. DACA21-96-D-0018

